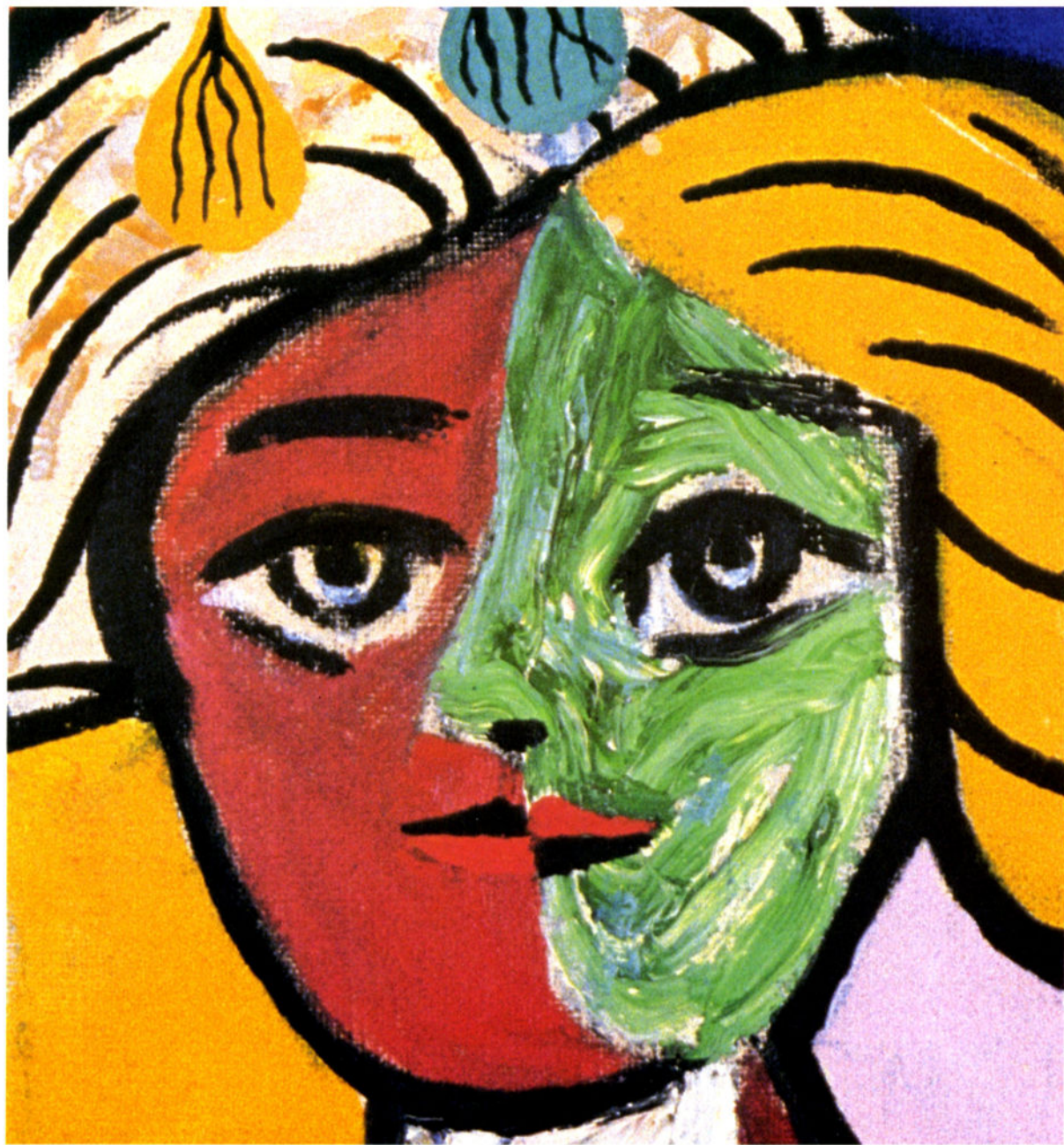


L'ŒIL À L'ŒUVRE



A L F R E D P E L L Á N

L ' Œ I L À L ' Œ U V R E

*When you look at Alfred Pellán's works,
what stands out are shapes, figures, objects and flashes of different colours.*

*L'Œil à l'œuvre is an observation game based on Alfred Pellán's painting called *Météore sept*.
How do you play this game? Just answer the questions below. You will find the answers either in the close-up
shot illustrating the cover page or in the reproduction of the whole painting. The technical information
printed on the back of the card may also be useful. And you may want to look at the actual painting
(in the exhibition gallery). But most important... keep your eyes open.*



1

ALFRED PELLAN USES A NUMBER OF GEOMETRIC SHAPES IN HIS COMPOSITION. WHAT ARE THEY?

2

THERE ARE QUITE A FEW WOMEN IN THIS PAINTING. HOW MANY?

3

A LOT OF THESE PEOPLE ARE DOING SOME KIND OF PHYSICAL ACTIVITY. WHAT ACTIVITIES ARE THESE?

4

A NUMBER OF OBJECTS APPEAR IN THE WORK. ONE IS A TOOL USED BY ARTISTS. WHAT IS IT?

5

IN PAINTING, THERE ARE THREE BASIC COLOURS CALLED PRIMARY COLOURS. YOU CAN SEE THEM IN THE CLOSE-UP ON THE COVER PAGE. WHAT ARE THESE COLOURS?

6

IF YOU MIX TWO PRIMARY COLOURS TOGETHER, YOU CREATE A SECONDARY COLOUR. A SECONDARY COLOUR APPEARS IN THE CLOSE-UP ON THE COVER PAGE. WHAT IS IT?

7

THERE ARE SEVERAL CATEGORIES OF PAINTING: LANDSCAPE, PORTRAITURE, NUDES, STILL-LIFE. IN WHICH CATEGORY WOULD YOU PLACE *Météore sept* ?

8

PLYWOOD, CARDBOARD, CANVAS, MASONITE, VELLUM PAPER ARE SOME OF THE SUPPORTS USED BY PELLAN. WHICH ONE IS USED IN *Météore sept* ?

9

PELLAN OFTEN MIXES DIFFERENT MATERIALS IN HIS PAINTINGS, LIKE POLYFILLA, SILICA, SAND, TOBACCO, WOOD, GLASS AND PLASTIC. WHICH OF THE ABOVE CAN YOU FIND IN THIS PAINTING?

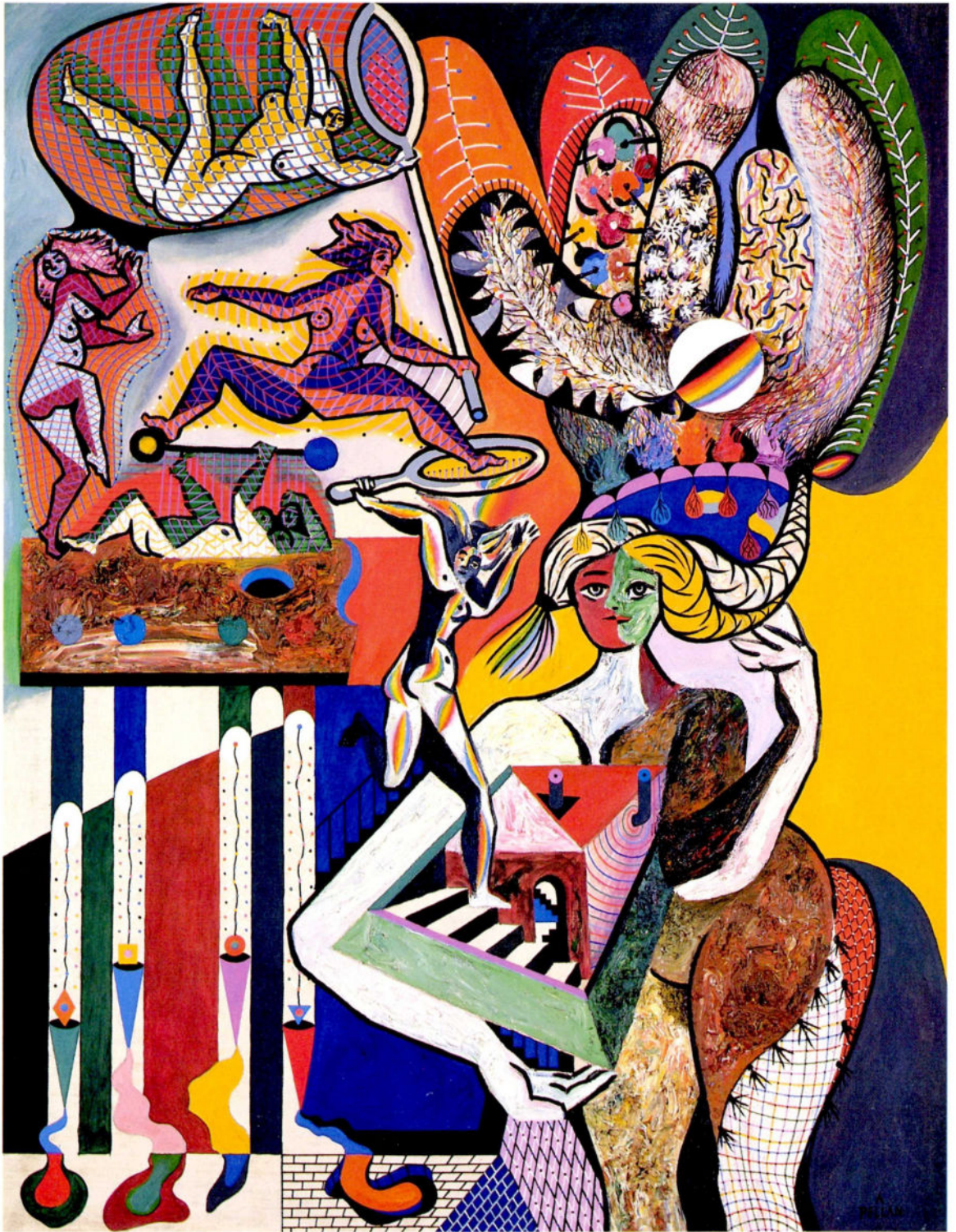
10

WHEN DO YOU THINK ALFRED PELLAN PAINTED THIS WORK?

A : 1854

B : 1954

C : 1984



A N S W E R S : 1► Circle/Oval/Triangle/Diamond/Trapezoid/Square 2► 6 women 3► Chasing butterflies/Lifting weights/Playing tennis/Dancing/Running, jumping 4► A palette 5► Yellow/Red/Blue 6► Green 7► All of them. In this painting, Pellan creates a hybrid work (a mixture of several genres). 8► Canvas 9► Tobacco 10► B : 1954

BIOGRAPHY

*Alfred Pellan was born in Québec City in 1906.
He studied art at the École des beaux-arts de Québec.
In 1926, At the age of 20, he travelled to France. In 1940, he had to return home
because of the war. After a brief stay in Québec City, he moved to Montréal
where he taught at the École des beaux-arts from 1944 to 1952.
Pellan was a founding member of the group Prisme d'yeux and helped write
the group's manifesto in 1948. He returned to Paris in 1952
and lived there until 1955, when he returned to Québec.
He settled in Laval, where he worked until his death
at the age of 82 in 1988.*

TECHNICAL INFORMATION

*Météore sept, c. 1954
Oil, tobacco on canvas, 114 x 89 cm
Collection: Musée d'art contemporain de Montréal
©Madeleine Pellan, 1992 / Vis*Art Droits d'Auteurs Inc.*

This activity card is a production of the Direction de l'éducation et de la documentation.

*Copy: Esther Cyr, Carolyne Mabeu, Bernard Tremblay
Editor: Chantal Charbonneau
Graphic Design: Devant le jardin de Bertuch
Translation: Helena Scheffer*

 **MUSÉE D'ART CONTEMPORAIN DE MONTRÉAL**

*The Musée d'art contemporain de Montréal is a provincially owned corporation
funded by the ministère de la Culture du Québec. The Musée receives additional financial support
from Communications Canada and the Canada Council.*