



A L F R E D P E L L A N , M a s c a r a d e , 1 9 4 2



L'ŒIL À L'ŒUVRE

The exhibition you are about to visit features part of the Musée d'art contemporain de Montréal collection, whose pieces are the fruit of Quebec, Canadian and foreign artists' work. The L'œil à l'œuvre game will challenge your sense of observation as you uncover the visual world of the artists.

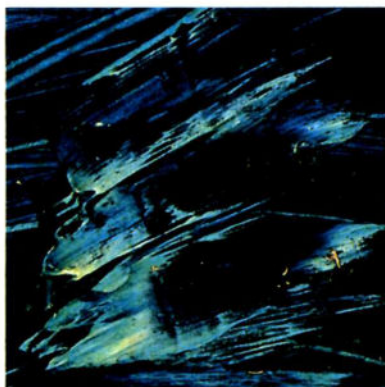
The game is played in two stages. First, you must use your private eye wits to match the given details with the appropriate pieces and then continue your investigation searching for the information requested.



CLUE: OPEN YOUR EYES WIDE! THERE IS WRITTEN INFORMATION NEAR THE PIECES.
CAREFUL: PRIVATE EYES LOOK FOR CLUES BUT NEVER LEAVE THEIR FINGERPRINTS.

1

WHAT FOUNDATION GAVE THIS PIECE TO THE MUSÉE?



7

WHO MADE THIS PAINTING?

2

IN WHAT YEAR WAS THIS PIECE PAINTED?

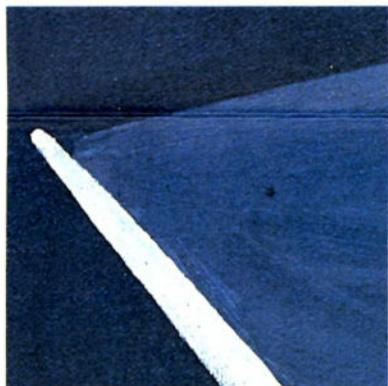


8

WHAT TYPE OF PRINTING TECHNIQUE DID THE ARTIST USE?

3

WHAT TYPE OF PAINT DID THE ARTIST USE FOR THIS PAINTING?

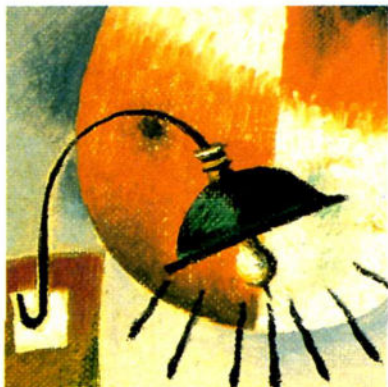


9

WHAT IS THE NAME OF THE COLLECTOR WHO OWNS THIS PORTRAIT?

4

HOW MANY PAINTINGS ARE THERE IN THIS FRAME?



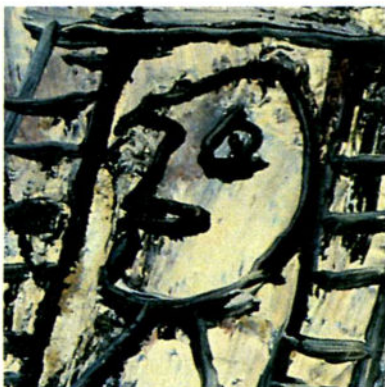
10

WHAT TYPE OF WOOD DID ROBERT ROUSSIL USE TO MAKE THIS SCULPTURE?

5

IN YOUR OPINION, WHAT TOOL DID BORDUAS USE TO PAINT THIS PIECE?

- BRUSH
 SPATULA
 ROLL

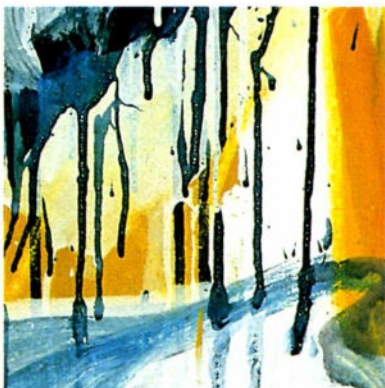


11

WHAT IS THE TITLE OF THIS PAINTING?

6

WHAT MATERIALS DID YVES TRUDEAU USE TO MAKE THIS SCULPTURE?



12

WHAT NUMBER DID THE ARTIST USE IN THE TITLE OF HIS PIECE?

- | | |
|--|---|
| <p><i>Alfred Pellan (cover page)</i>
 <i>Mascarade, 1942</i>
 <i>Oil on canvas</i>
 <i>130.5 x 162.2 cm</i>
 <i>© Alfred Pellan 1992</i></p> <p>1. <i>Stanley Cosgrove</i>
 <i>Young Girl (detail), 1950</i>
 <i>Oil on wood panel</i>
 <i>43 x 35.5 cm</i>
 <i>Donor: Max and Iris Stern Foundation</i></p> <p>2. <i>Pierre Gauvreau</i>
 <i>Oblongue étalène (detail), 1947</i>
 <i>Oil on canvas</i>
 <i>60.8 x 106.5 cm</i>
 <i>Donor: Gilles Corbeil</i></p> <p>3. <i>Jean-Paul Jérôme</i>
 <i>L'Aube-Pastorale (detail), 1954</i>
 <i>Oil on canvas</i>
 <i>45.7 x 61.2 cm</i></p> <p>4. <i>Jean Dallaire</i>
 <i>Le Peintre maudit (detail), circa 1954</i>
 <i>Oil on canvas</i>
 <i>50.8 x 61 cm</i>
 <i>Donor: Max and Iris Stern Foundation</i></p> <p>5. <i>Paul-Émile Borduas</i>
 <i>Sans titre (n° 34) (detail), 1957</i>
 <i>Oil on canvas</i>
 <i>129 x 195 cm</i>
 <i>Donor: National Museums of Canada</i></p> <p>6. <i>Yves Trudeau</i>
 <i>L'Homme révolté or</i>
 <i>Composition 412 (detail), 1963</i>
 <i>Wood and welded iron</i>
 <i>90.3 x 52.2 x 49.6 cm</i>
 <i>Donor: Yves Trudeau, artist</i></p> | <p>7. <i>Marcelle Ferron</i>
 <i>Composition en bleu (detail), 1950</i>
 <i>Oil on masonite</i>
 <i>41.8 x 47.2 cm</i>
 <i>Donor: Dr. Bruno M. Cormier</i>
 <i>and Ruby Cormier</i></p> <p>8. <i>Albert Dumouchel</i>
 <i>Lettre ouverte à un jeune Beate</i>
 <i>anglais (detail), 1965</i>
 <i>Lithography, 15/16</i>
 <i>56.5 x 76.1 cm</i>
 <i>© Albert Dumouchel 1992 /</i>
 <i>Vis*Art Droit D'auteur inc.</i></p> <p>9. <i>Gabor Szilasi</i>
 <i>Andor Pasztor, Montréal (detail),</i>
 <i>1977</i>
 <i>Portrait: black and white print</i>
 <i>Interior: color print</i>
 <i>Printing of 1979</i>
 <i>28.7 x 22.3 cm (each)</i></p> <p>10. <i>Robert Roussil</i>
 <i>Bois de balancier (detail), 1968</i>
 <i>Elm</i>
 <i>180.3 x 100.3 x 40 cm</i>
 <i>Donor: anonymous</i></p> <p>11. <i>Jean Dubuffet</i>
 <i>Chacun chez soi (detail), 1957</i>
 <i>Oil on canvas</i>
 <i>80 x 100.2 cm</i>
 <i>© Jean Dubuffet 1992 /</i>
 <i>Vis*Art Droit D'auteur inc.</i></p> <p>12. <i>Jacques Hurtubise</i>
 <i>Peinture n° 41 (detail), 1962</i>
 <i>Oil on canvas</i>
 <i>195.9 x 127.1 cm</i></p> |
|--|---|

This card of activity is a production of the Direction de l'éducation et de la documentation.

Creation and writing: Luc Guillemette
Editor: Chantal Charbonneau
Graphic design: Devant le jardin de Bertuch
Photos 1, 7 and 12 by Denis Farley
Photo 9 by Richard-Max Tremblay

All pieces are part of the Musée d'art contemporain de Montréal collection.

The Musée d'art contemporain de Montréal is a provincially owned corporation funded by the ministère des Affaires culturelles du Québec and benefits from the Communications Canada and the Canadian Arts Council financial aid.

LA COLLECTION

t a b l e a u i n a u g u r a l